

Universal Gauge Quick Install Guide for AEM

Thank you for your order!

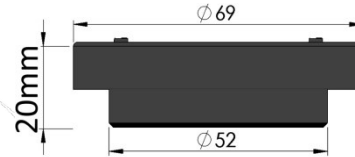
The customer satisfaction at Perfect Tuning is our biggest priority. If you have any questions, suggestions or issues do not hesitate to contact us at support@perfecttuning.net or on Facebook.

User manual and latest firmware version is available on the product page at

<http://perfecttuning.net>

Package includes:

- Perfect Tuning Universal Gauge
- 5 ft cable
- Mounting bracket with 2x 4-40 screws



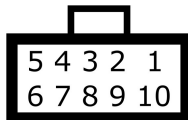
WARNING

Do not use longer screws than provided in the two rear mounting holes. Using too long screws can touch the circuit board inside and damage the gauge.

Opening the gauge will void the warranty.

Wiring

Always disconnect the vehicle battery when installing the gauge. Do not leave any wires not isolated. Always solder or crimp the wires and protect with heat shrink. Refer to the user manual to connect the sensors.



View when looking at the gauge.

Pin	Color	Function
1	Red	12v (+). Always install the gauge on a fused supply (3A)
2	Black	Vehicle Ground (-)
3	White	0-5v analog input 1 (optional)
4	Yellow	0-5v analog input 2 (optional)
5	Brown	CAN bus H
6	Purple	CAN bus L
7	Orange	0-5v analog input 3 (optional)
8	Gray	Digital input (not available)
9	Blue	5v output (optional)
10	Green	Digital output. Connected to the ground when output is enabled.

The AEMNet connector is present on most of the Infinity plug and play harnesses like this.

The connector used is a Deutsch 4-pin connector

- Deutsch DTM04-4P (Receptacle connector, present in the harness)
- Deutsch 1060-20-0222 (Pins, present in the harness)
- Deutsch DTM06-4S (Plug connector, where the gauge is connected)
- Deutsch 1062-20-0222 (Pins where the gauge is connected)

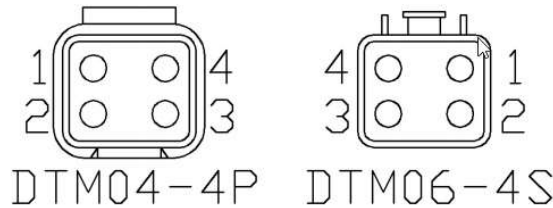
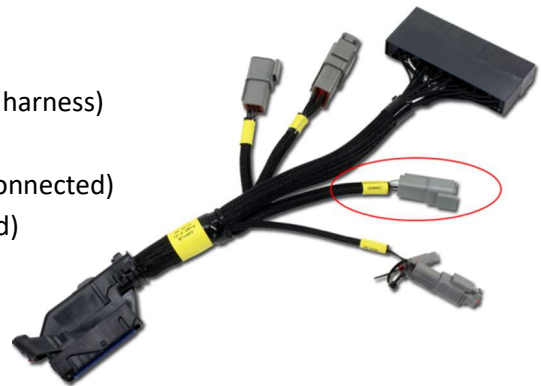


Figure 1: AEMnet connectors, wire entry view

AEMnet Connector	Series 2 EMS Connector
Pin 1	White
Pin 2	Green
Pin 3	Red
Pin 4	Black
	CAN1H
	CAN1L
	AEMnet Power (switched 12 volts)
	AEMnet Ground

Table 1: AEMnet connector pinout



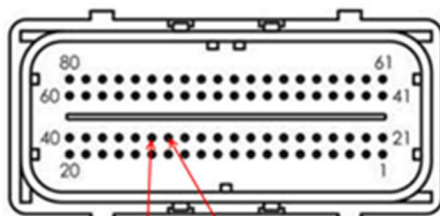
*** Always double-check that the CANH and CANL wires are connected to the right pin in the connector if the communication is not working ***

SERIES 2 EMS

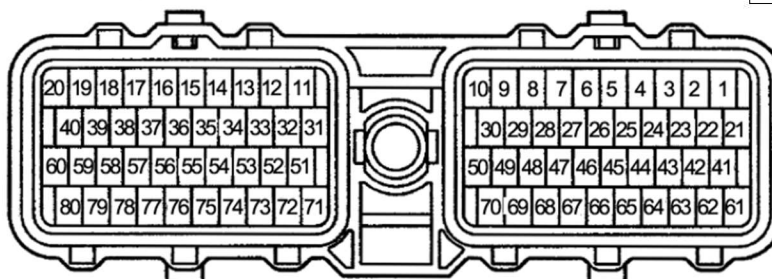
When connecting to a Series 2 EMS, an AEMnet branch will have to be added to the factory harness. AEM has several AEMnet to Series 2 EMS adapters available. See Table 1 below for a list of the part numbers and corresponding Series 2 EMS units.

Locating AEMNet pins

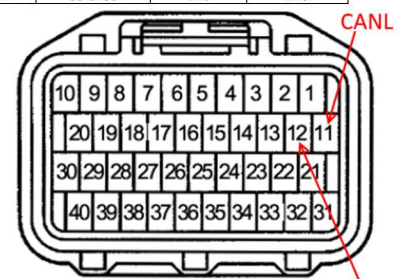
Infinity-6/8h



INFINITY "C1" 80 PIN



B



A

AEM Series 2 EMS	AEMnet Adapter P/N	CAN1L Pin Location	CAN1H Pin Location
30-6030	30-3430	C22	C21
30-6040	30-3431	A22	C2
30-6050	30-3432	D14	D10
30-6051	30-3432	D14	D10
30-6052	30-3432	D14	D10
30-6053	30-3432	D14	D10
30-6060	30-3432	C28	C29
30-6100	30-3433	11A	12A
30-6101	30-3433	11A	12A
30-6300	30-3434	75	13
30-6310	30-3431	77	87
30-6311	30-3431	57/77	67/87
30-6320	30-3435	33	13
30-6600	30-3436	42	12
30-6601	30-3436	42	12
30-6610	30-3437	12	69
30-6611	30-3437	12	69
30-6620	30-3437	57	40
30-6820	30-3438	B29	B28
30-6821	30-3438	B29	B28